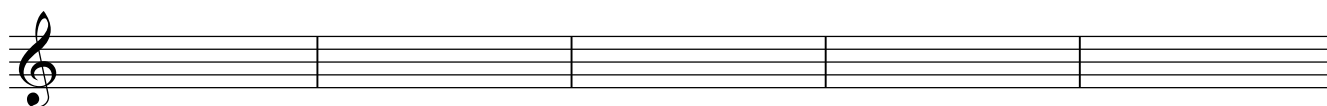
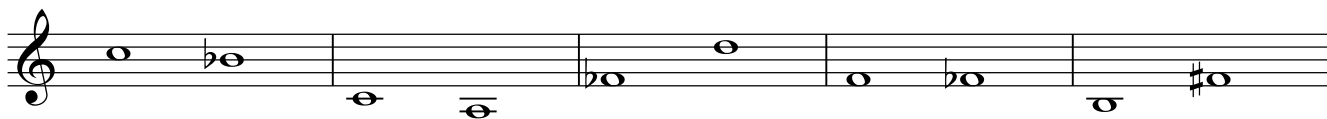


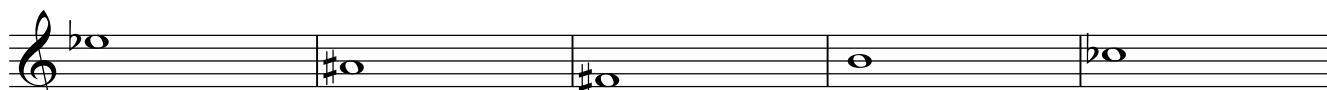
Teoría

NOMBRE _____ 6

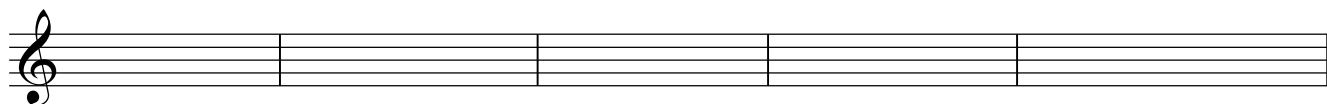
1.- Clasifica e invierte estos intervallos:



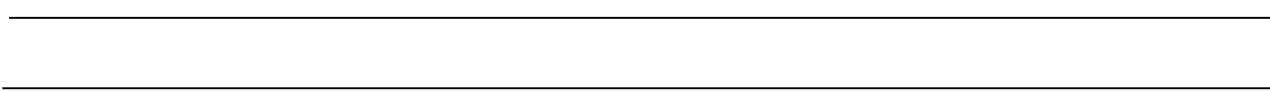
2.- Dibuja la nota que falta a estos intervallos, y luego inviértelos:



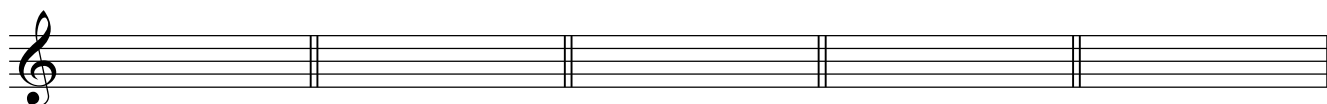
3ª Mayor desc. 5ª Justa asc. 6ª Mayor asc. 2ª menor desc. 4ª Justa desc.



3.- A qué tonalidades corresponden estas armaduras:



4.- Dibuja las armaduras de estas tonalidades:



MI b menor MI menor MI b Mayor MI Mayor FA Mayor

5.- Dibuja los cuatro tipos de MI Mayor. Indica el número al que corresponde cada uno.



6.- Dibuja los cuatro tipos de Do menor. Pon el nombre de cada uno de ellos.

Two empty musical staves, each with a treble clef and a vertical bar line, intended for drawing the four types of C minor chords.

7.- Dibuja los siguientes grados de MI \flat Mayor:

A musical staff with five empty boxes for drawing the degrees of E-flat major. Below the staff, the labels TÓNICA, MEDIANTE, SUBDOMINANTE, DOMINANTE, and SENSIBLE are placed under their respective boxes.

8.- Construye estos acordes:

A musical staff with five empty boxes for constructing chords. Below the staff, the labels P.M., P.m., 5^a Au., 5^a Dis., and 7^a Dom. are placed under their respective boxes.

9.- Clasifica estos acordes:

A musical staff with five empty boxes for classifying chords. Below the staff, there are five empty boxes for writing the classification.

10.

a).- Completa estos compases con figuras y silencios:

A musical staff with five empty boxes for completing measures with figures and rests. The first measure contains a pair of eighth notes with a '2' above them. The second measure contains a quarter rest with a '7' below it. The third measure contains a pair of eighth notes. The fourth measure contains a quarter note. The fifth measure contains a triplet of eighth notes with a '3' above them.

b).- Escribe estas notas en clave de Fa en 4^a línea. Recuerda que deben ser unísonos:

A musical staff with seven empty boxes for writing notes in F-clef. The notes are: a half note on the 4th line, a quarter note on the 3rd line, a quarter note on the 2nd line, a quarter note on the 1st line, a quarter note on the 4th space, a quarter note on the 3rd space, and a quarter note on the 2nd space.