

NOMBRE _____

2

1- Clasifica e invierte estos intervallos:

Two treble clefs. The first staff contains five measures of intervals: G4-A4, A4-B4, C5-B4, C5-D5, and D5-E5. The second staff is empty for the student to write the classification and inversion.

Two treble clefs. The first staff contains five measures of intervals: E4-F4, F4-G4, A4-B4, C5-B4, and D5-E5. The second staff is empty for the student to write the classification and inversion.

Two treble clefs. The first staff contains five measures of intervals: G4-A4, A4-B4, C5-B4, C5-D5, and D5-E5. The second staff is empty for the student to write the classification and inversion.

Two treble clefs. The first staff contains five measures of intervals: E4-F4, F4-G4, A4-B4, C5-B4, and D5-E5. The second staff is empty for the student to write the classification and inversion.

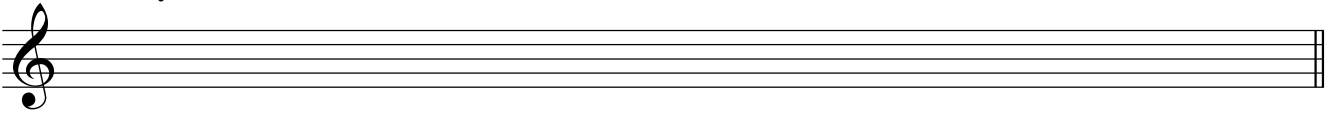
2- Completa estos compases con figuras y silencios:

Single treble clef, C major key signature, 4/4 time signature. Five measures of rhythmic notation: 1. Quarter note G4, quarter note A4, eighth note G4, eighth note F4. 2. Quarter note E4, quarter note D4. 3. Whole rest. 4. Quarter note C5, quarter note B4. 5. Quarter note A4, quarter note G4.

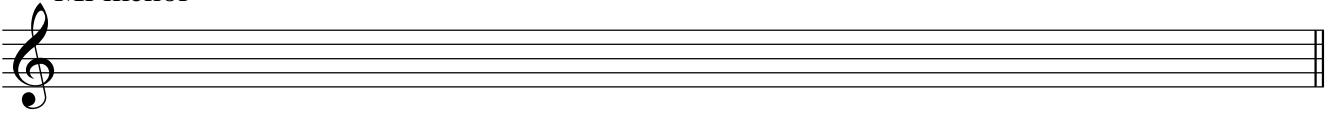
Single treble clef, G major key signature, 4/4 time signature. Five measures of rhythmic notation: 1. Quarter note G4, quarter note A4. 2. Quarter note B4, quarter note C5. 3. Whole rest. 4. Quarter rest, quarter note B4. 5. Quarter note A4, quarter note G4.

3.- Dibuja estas tonalidades e indica los tonos y semitonos, la tónica y la dominante:

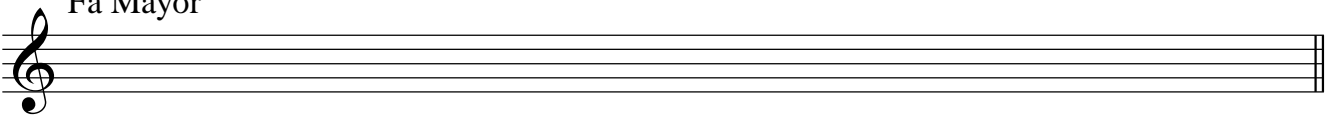
Si b Mayor



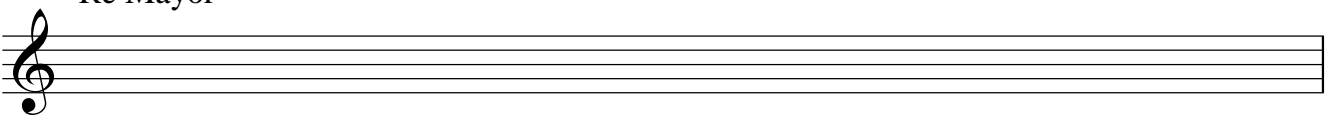
Mi menor



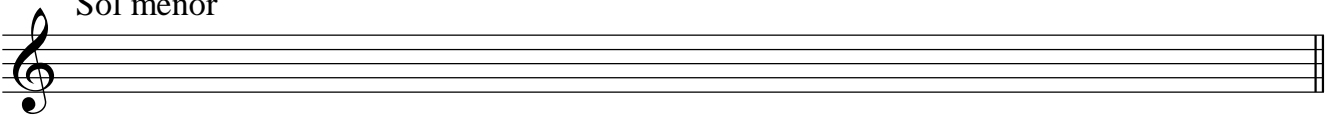
Fa Mayor



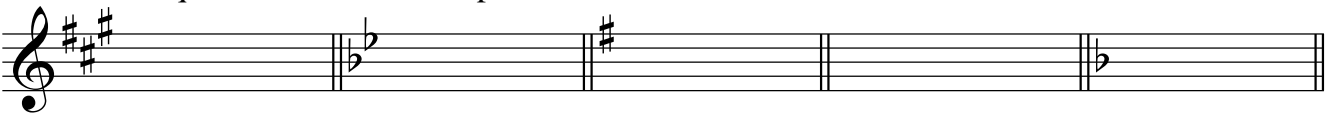
Re Mayor



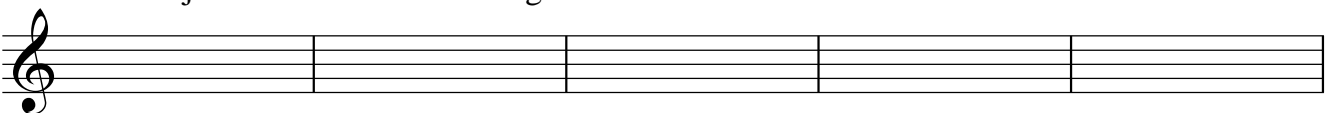
Sol menor



4.- A qué tonalidades corresponden estas armaduras:



5.- Dibuja las armaduras de las siguientes tonalidades:



Re Mayor

La menor

Mi menor

Mi b Mayor

La Mayor