

# TEORÍA 2º E.P.

NOMBRE \_\_\_\_\_

2

Construye e invierte estos acordes:

A musical staff in treble clef containing five notes. Below each note is a label: P M (C4), P.m. (D#4), 5ª Au. (E4), 5ª Dis (F#4), and 7ª Dom. (G4).

Clasifica estos acordes, e indica si están en estado fundamental o inversión:

Two systems of musical staves. The first system has a treble clef staff with five chords: C major, D major, E major, F major, and G major. The second system has a bass clef staff with five chords: C major, D major, E major, F major, and G major.

Dibuja estas notas en las diferentes claves:

A musical staff in treble clef with a sequence of notes: C4, D4, E4, F4, G4, A4, B4, C5. Below it are three empty staves for drawing the notes in different clefs: bass clef, alto clef, and tenor clef.

Transporta este fragmento un intervalo de: 2ª menor descendente.

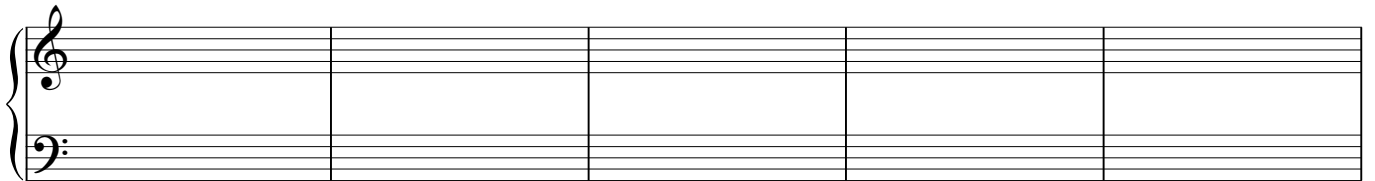
Tonalidad:



Tonalidad:



Construye las cadencias de Fa Mayor. Pon el nombre en cada una de ellas.



Construye y clasifica los acordes de TONICA, MEDIANTE, SUBDOMINANTE, DOMINANTE Y SENSIBLE DE:  
Mi Mayor

