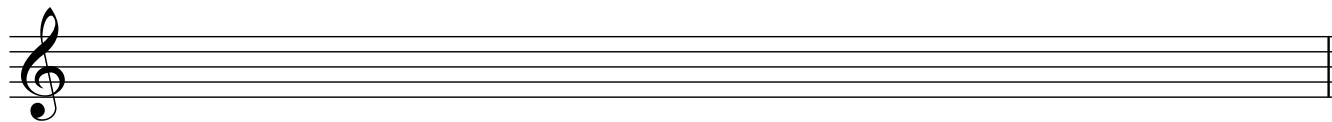


Teoría 1º E.P.

Semana del 23 al 29 de Marzo

NOMBRE _____

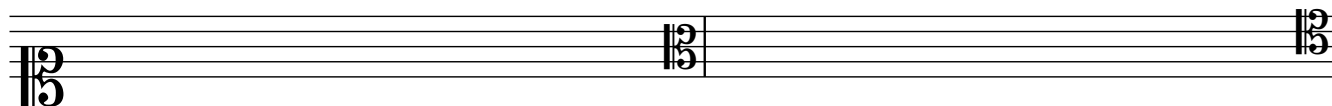
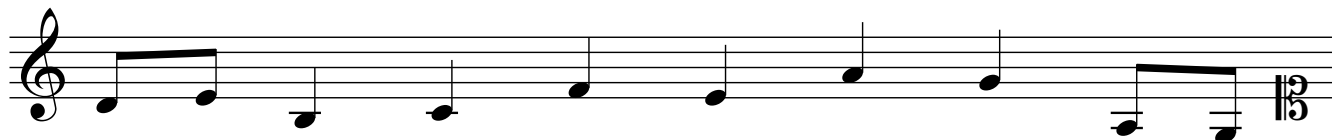
1.- Dibuja la escala pentáfona diatónica de Fa en modo de RE:



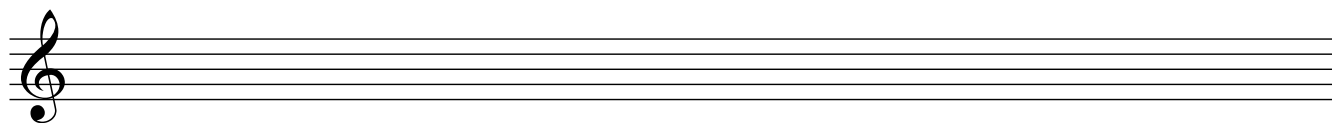
Dibuja y nombra los cuatro modos auténticos:



2.- Transcribe estas notas a las otras claves (unísonos):



3.-Dibuja la escala cromática de Do ascendente y descendente:



Dibuja las escalas hexátonas que conoces:



4.- Construye e invierte estos acordes:

A musical staff in treble clef containing three chords. The first chord is a whole note chord with notes G4 and B4, labeled "P.M.". The second chord is a whole note chord with notes Bb4 and G4, labeled "P.m.". The third chord is a whole note chord with notes G4 and B4, labeled "5+".

A musical staff in treble clef containing two chords. The first chord is a whole note chord with notes Bb4 and G4, labeled "5". The second chord is a whole note chord with notes G#4 and B4, labeled "7+".

5.- Clasifica estos acordes e indica su inversión con el cifrado correspondiente:

A musical staff in grand staff (treble and bass clefs) containing five chords. The chords are: 1) Gb4-Bb4 (treble) / Gb4 (bass); 2) Gb4-Bb4 (treble) / Gb4 (bass); 3) G#4-B4 (treble) / G#4 (bass); 4) Gb4-Bb4 (treble) / Gb4 (bass); 5) Gb4-Bb4 (treble) / Gb4 (bass).

6.- Transporta este fragmento un intervalo de 2ª menor asc.:

Tonalidad:

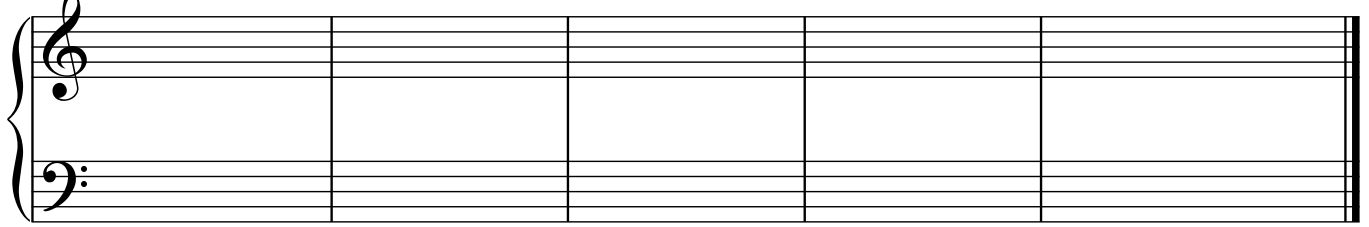
A musical staff in treble clef with a key signature of three sharps (F#, C#, G#). The fragment consists of the following notes: F#4 (quarter), G#4 (quarter), A4 (quarter), B4 (quarter), C5 (quarter), B4 (quarter), A4 (quarter), G#4 (quarter), F#4 (quarter).

Tonalidad:

An empty musical staff in treble clef for transcription.

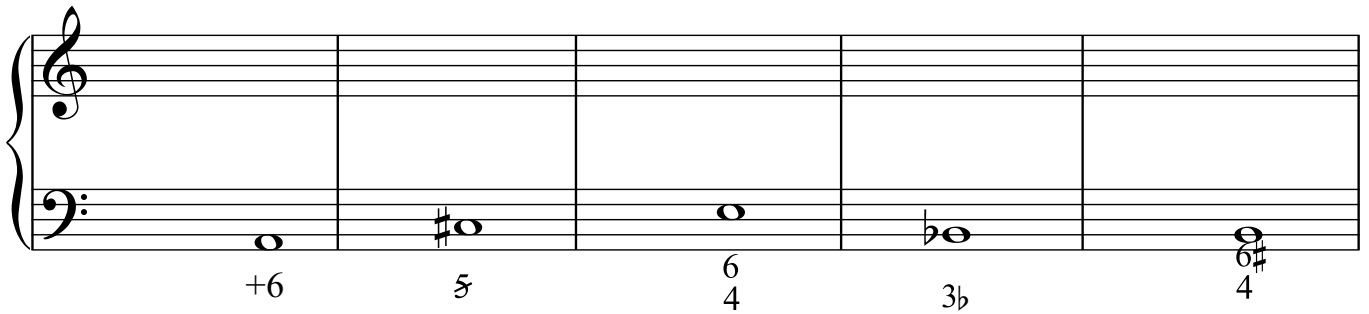
7.- Construye, nombra y clasifica los acordes de Sol menor armónica:

I III IV V VII



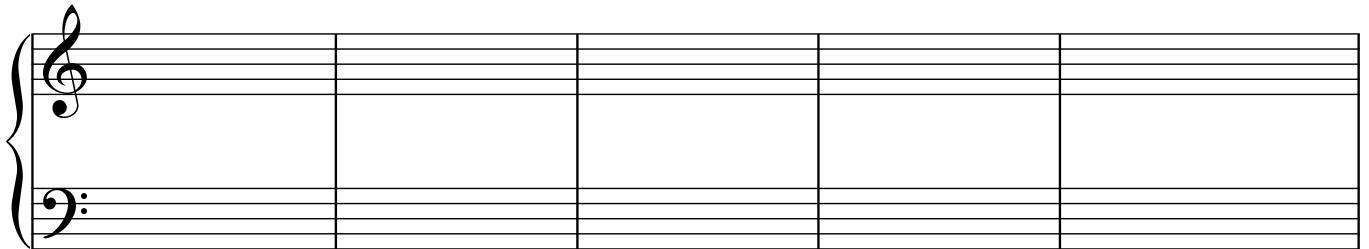
A musical staff with five empty measures, labeled I, III, IV, V, and VII above the staff. The staff is divided into five equal parts by vertical lines.

8.- Forma los siguientes acordes en la posición que se te indica:



A musical staff with five measures. The notes and fingerings are: +6, 5 with a sharp sign, 6/4, 3b, and 4 with a sharp sign. The notes are placed on the bass line of the staff.

9.- Construye y nombra las cadencias de Fa menor:



A musical staff with five empty measures, intended for constructing and naming cadences for F minor.

10.- Dibuja la interpretación de estos adornos:



A musical staff with five measures showing various ornaments: a mordent, a mordent with a dot, a mordent with a question mark, a mordent with a double wavy line, and a mordent with a double wavy line and a sharp sign.