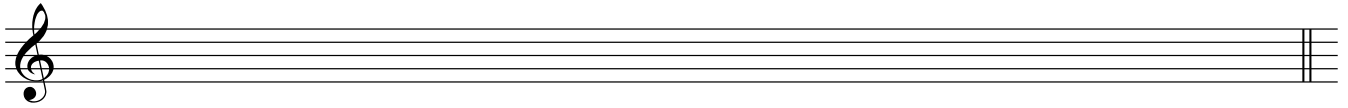


# Teoría 1º E.P.

## Semana del 13 al 19 de abril

NOMBRE \_\_\_\_\_

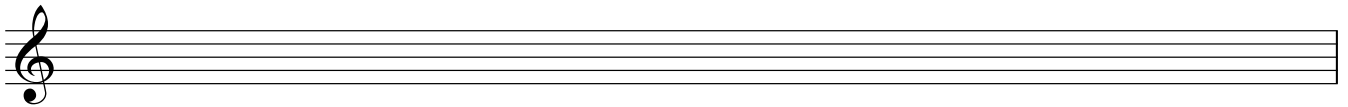
1.- Dibuja la escala pentáfona de mi b en modo La:



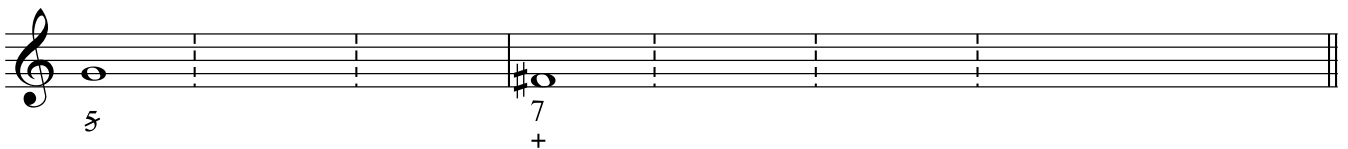
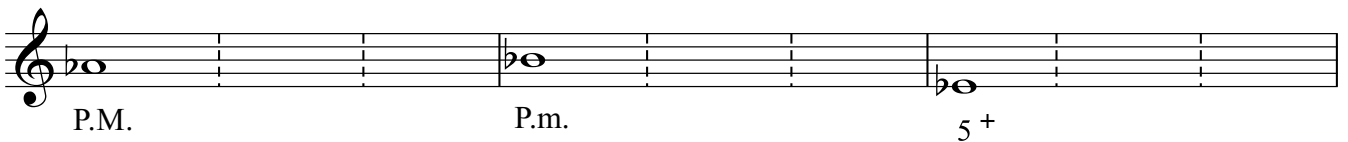
.- Dibuja las escalas hexátonas que conoces:



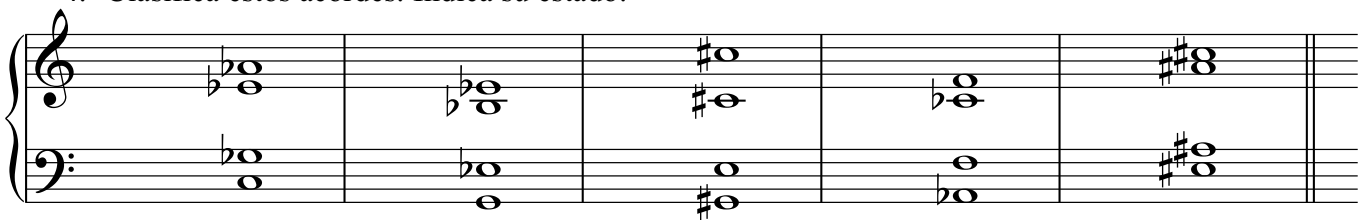
2.-Dibuja la escala cromática de Do ascendente y descendente:



3.- Construye e invierte estos acordes:



4.- Clasifica estos acordes. Indica su estado:

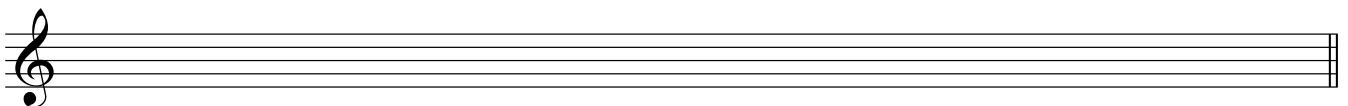


5.- Transporta este fragmento un intervalo de 2ª menor asc.:

Tonalidad:



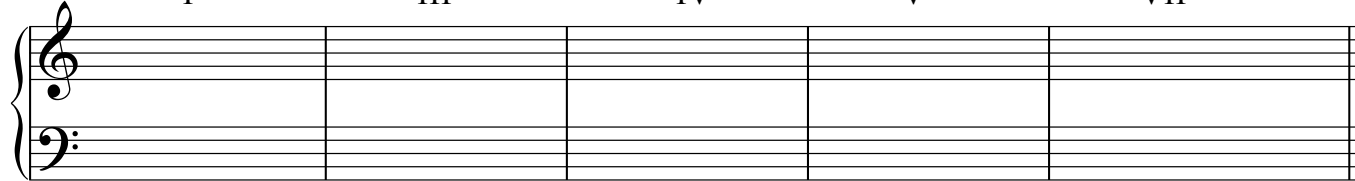
Tonalidad:



2

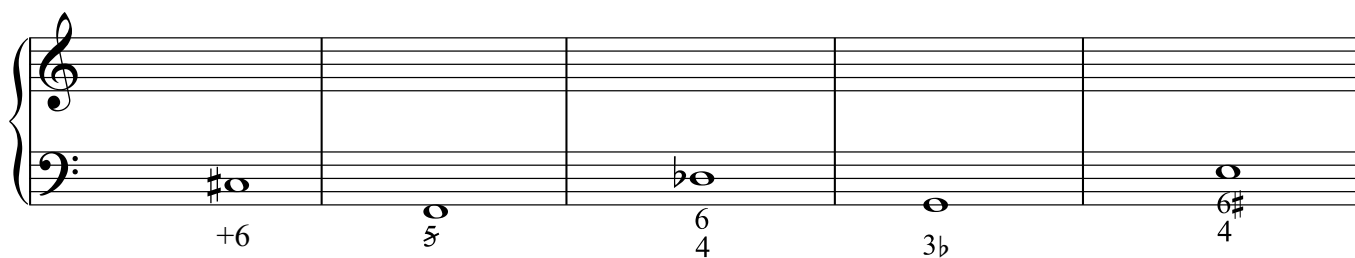
6.- Construye, nombra y clasifica los acordes de Fa # menor armónica:

I                      III                      IV                      V                      VII



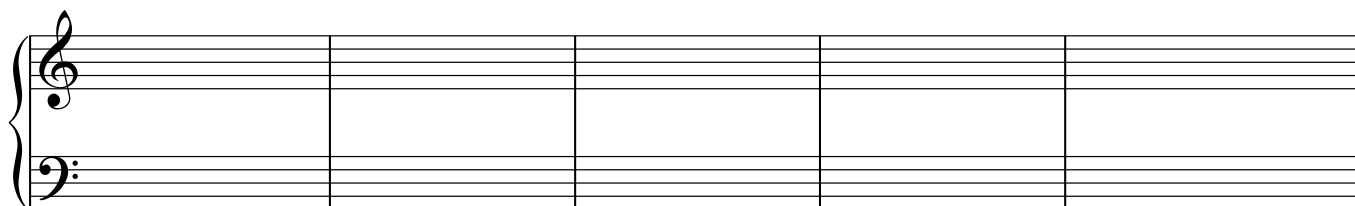
A musical staff with five empty measures, each labeled with a Roman numeral: I, III, IV, V, and VII. The staff is divided into two systems (treble and bass clefs).

7.- Forma los siguientes acordes en la posición que se te indica:



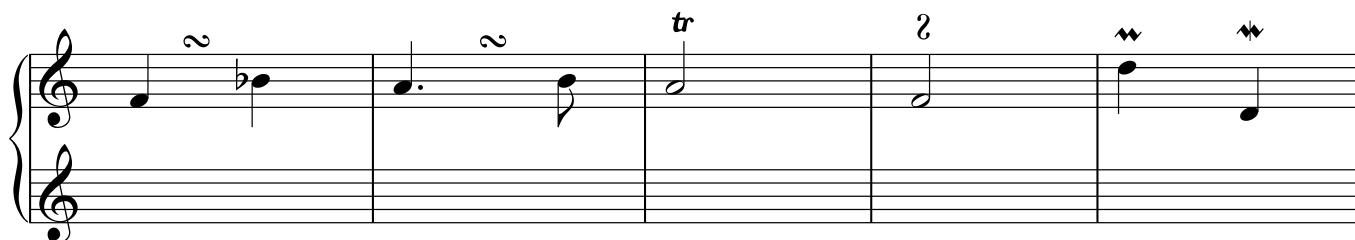
A musical staff with five measures. The bass clef contains the following chord positions: 1. A sharp sign (#) above a whole note on the 6th line, with '+6' below. 2. A natural sign (♮) above a whole note on the 5th line, with '5' below. 3. A flat sign (b) above a whole note on the 6th line, with '6' above and '4' below. 4. A natural sign (♮) above a whole note on the 3rd line, with '3b' below. 5. A sharp sign (#) above a whole note on the 6th line, with '6#' above and '4' below.

8.- Construye y nombra las cadencias de Si M.:



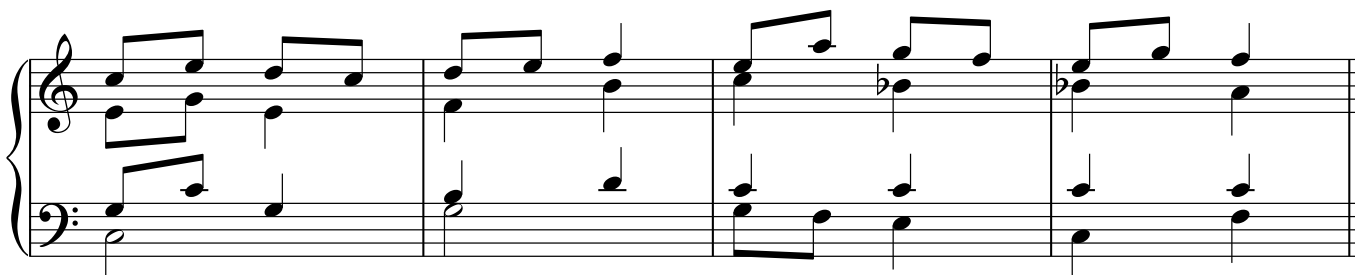
A musical staff with five empty measures, divided into two systems (treble and bass clefs).

9.- Dibuja la interpretación de estos adornos:



A musical staff with five measures. The first measure has a fermata over a quarter note. The second measure has a fermata over a quarter note. The third measure has a trill (tr) over a quarter note. The fourth measure has a mordent over a quarter note. The fifth measure has a mordent over a quarter note.

10.- Indica las tonalidades de este fragmento:



A musical staff with four measures. The first measure has a quarter note on G4. The second measure has a quarter note on A4. The third measure has a quarter note on B4. The fourth measure has a quarter note on C5. The staff is divided into two systems (treble and bass clefs).