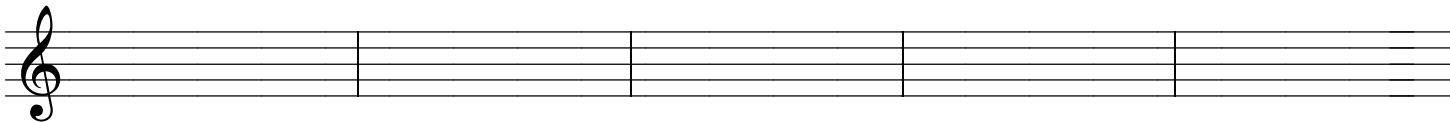
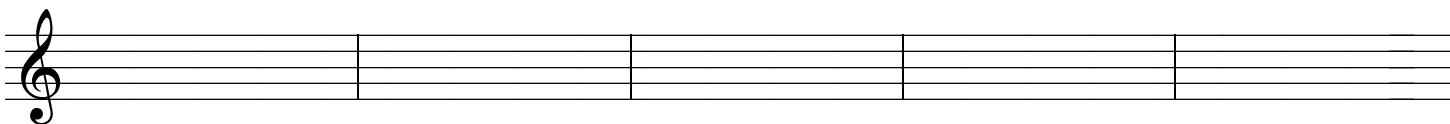


Ejercicios de teoría. 3º E.E.

NOMBRE _____

1.- Clasifica e invierte estos intervallos:



2- Dibuja las armaduras de estas tonalidades:

A musical staff in treble clef divided into five empty measures for drawing key signatures. Below each measure is a label: Sol b Mayor, Sol menor, Sol # menor, Sol Mayor, and Fa Mayor.

Sol b Mayor Sol menor Sol # menor Sol Mayor Fa Mayor

A musical staff in treble clef divided into five empty measures for drawing key signatures. Below each measure is a label: Fa # Mayor, Fa menor, Fa # menor, Mi b menor, and Mi Mayor.

Fa # Mayor Fa menor Fa # menor Mi b menor Mi Mayor

3- A qué tonalidades corresponden estas armaduras:

A musical staff in treble clef showing five key signatures: two sharps (F# and C#), one flat (Bb), two sharps (F# and C#), two flats (Bb and Eb), and three sharps (F#, C#, and G#).

A musical staff in treble clef showing five key signatures: three sharps (F#, C#, and G#), two flats (Bb and Eb), three sharps (F#, C#, and G#), two flats (Bb and Eb), and three sharps (F#, C#, and G#).

4- Completa estos compases con figuras y silencios:

A musical staff in treble clef with a common time signature. It contains four measures: the first has a triplet of quarter notes; the second has two eighth notes; the third has a triplet of quarter notes; the fourth has a quarter note.

5- Dibuja las escalas siguientes. Indica la Tónica (T), la Dominante (D) y la Subdominante (SD).
 Recuerda: Coloca las alteraciones de la armadura en las notas de la escala.

La m armónica. Re m melódica.

Two empty musical staves in treble clef for drawing the scales for La m armónica and Re m melódica.

Si m. Si b M.

Two empty musical staves in treble clef for drawing the scales for Si m and Si b M.

La b M. Re M.

Two empty musical staves in treble clef for drawing the scales for La b M and Re M.