

# Teoría 3º E.E.

## Semana de 16 al 22 de Marzo

NOMBRE \_\_\_\_\_

1- Clasifica e invierte estos intervallos:

A musical staff in treble clef with a key signature of one sharp (F#). The notes are: G4 (quarter), F#4 (quarter), E4 (quarter), D4 (quarter), C4 (quarter), B3 (quarter), A3 (quarter), G3 (quarter). Below the staff is a blank line for classification and another blank line for inversion.

A musical staff in treble clef with a key signature of one sharp (F#). The notes are: G4 (quarter), A4 (quarter), B4 (quarter), C5 (quarter), B4 (quarter), A4 (quarter), G4 (quarter), F#4 (quarter). Below the staff is a blank line for classification and another blank line for inversion.

A musical staff in treble clef with a key signature of one flat (Bb). The notes are: G4 (quarter), F#4 (quarter), E4 (quarter), D4 (quarter), C4 (quarter), B3 (quarter), A3 (quarter), G3 (quarter). Below the staff is a blank line for classification and another blank line for inversion.

2- Completa estos compases con figuras y silencios:

A musical staff in treble clef with a common time signature (C). The notes are: G4 (quarter), A4 (quarter), B4 (quarter), C5 (quarter), B4 (quarter), A4 (quarter), G4 (quarter), F#4 (quarter). Below the staff is a blank line for completion.

A musical staff in treble clef with a 3/8 time signature. The notes are: G4 (quarter), A4 (quarter), B4 (quarter), C5 (quarter), B4 (quarter), A4 (quarter), G4 (quarter), F#4 (quarter). Below the staff is a blank line for completion.

3.- Dibuja y nombra los cuatro tipos de estas escalas:

Mi menor




---

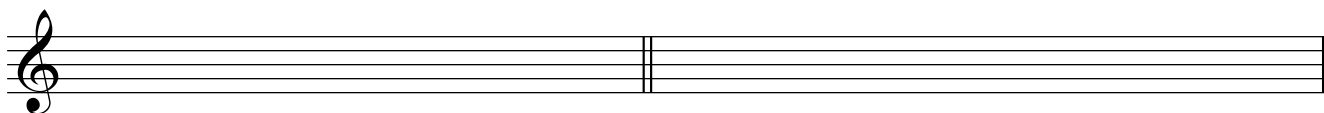



---

Sol menor




---




---

4.- ¿A qué tonalidades pertenecen estas armaduras?:

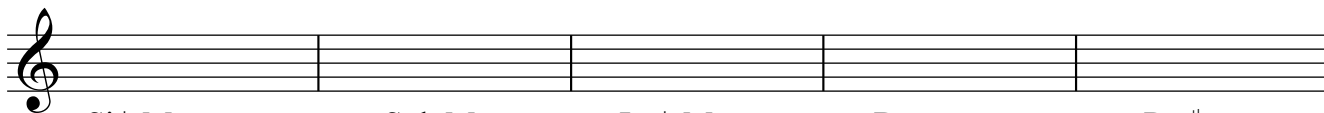



---



---

Dibuja las armaduras de estas tonalidades:



Si b Mayor

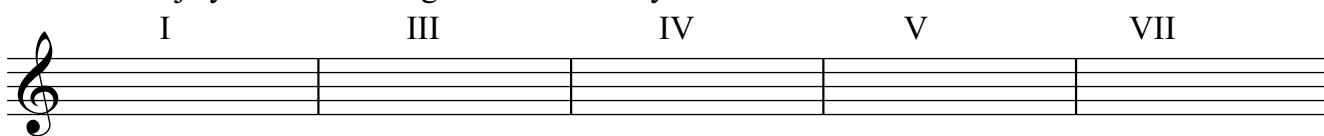
Sol Mayor

La b Mayor

Do menor

Re # menor

5.- Dibuja y nombra estos grados de Re Mayor:



I

III

IV

V

VII

---