

Teoría 3º E.E.  
Semana del 6 al 12 de abril

NOMBRE \_\_\_\_\_

1.- Clasifica e invierte estos intervallos:

A musical staff in treble clef with a key signature of one sharp (F#). It contains five measures of music, each with a half note. The notes are: F#4, G4, Bb4, B4, and F#4. Below the staff are two blank staves for classification and inversion.

A musical staff in treble clef with a key signature of two flats (Bb, Eb). It contains five measures of music, each with a half note. The notes are: Bb4, C5, Bb4, Eb5, and Eb5. Below the staff are two blank staves for classification and inversion.

Completa estos compases con figuras y silencios:

A musical staff in treble clef with a 12/8 time signature. It contains three measures for completion. The first measure has two eighth notes. The second measure has two eighth notes with a '2' above them and a quarter rest. The third measure has two eighth notes.

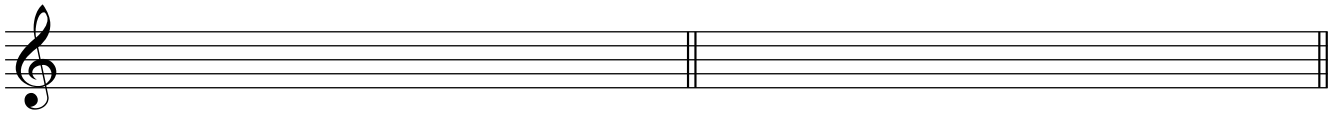
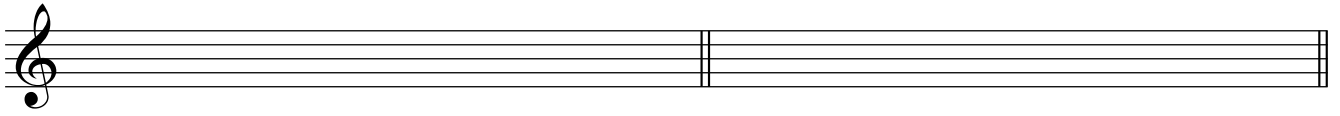
A musical staff in treble clef. It contains two measures for completion. The first measure has four eighth notes. The second measure has a quarter note, two eighth notes, and a quarter rest.

A musical staff in treble clef with a 4/4 time signature. It contains three measures for completion. The first measure has a triplet of eighth notes. The second measure has a triplet of eighth notes, another eighth note, and a quarter note. The third measure has a quarter note.

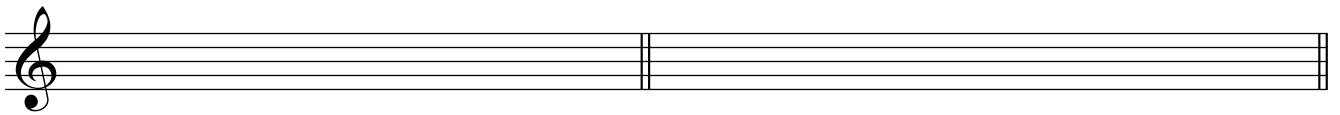
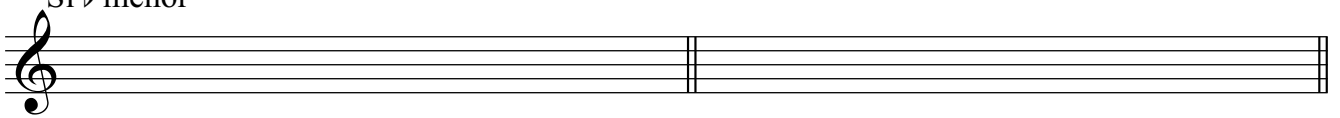
A musical staff in treble clef. It contains two measures for completion. The first measure has a quarter rest, an eighth note, and a quarter rest. The second measure has a triplet of eighth notes.

3.- Dibuja y nombra los cuatro tipos de estas escalas:

Si menor



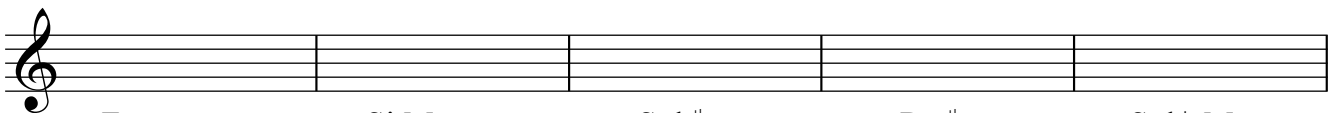
Si  $\flat$  menor



4 a).- ¿A qué tonalidades pertenecen estas armaduras?:



4 b).-Dibuja las armaduras de estas tonalidades:



Fa menor

Si Mayor

Sol  $\sharp$  menor

Re  $\sharp$  menor

Sol  $\flat$  Mayor

5. - Dibuja y nombra estos grados de Sol menor:

I

III

IV

V

VII

