

Teoría 3º E.E.

Semana del 30 de marzo al 5 de abril

NOMBRE _____

1.- Clasifica e invierte estos intervallos:

A musical staff in treble clef with a key signature of one sharp (F#). It contains five measures of intervals: 1. G4 (quarter), A4 (quarter), B4 (quarter), C5 (quarter). 2. G4 (quarter), F4 (quarter), E4 (quarter), D4 (quarter). 3. G4 (quarter), F4 (quarter), E4 (quarter), D4 (quarter). 4. G4 (quarter), A4 (quarter), B4 (quarter), C5 (quarter). 5. G4 (quarter), F#4 (quarter), E4 (quarter), D4 (quarter).

A musical staff in treble clef with a key signature of one sharp (F#). It contains five measures of intervals: 1. G4 (quarter), A4 (quarter), B4 (quarter), C5 (quarter). 2. G4 (quarter), F4 (quarter), E4 (quarter), D4 (quarter). 3. G4 (quarter), F#4 (quarter), E4 (quarter), D4 (quarter). 4. G4 (quarter), F4 (quarter), E4 (quarter), D4 (quarter). 5. G4 (quarter), F4 (quarter), E4 (quarter), D4 (quarter).

2.- Completa estos compases con figuras y silencios:

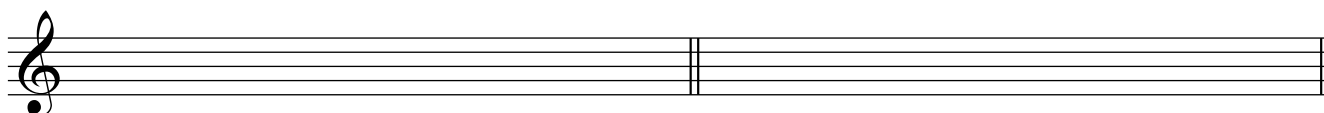
A musical staff in treble clef with a 12/8 time signature. It contains two measures for completion: 1. A quarter note followed by a slash and a vertical line. 2. A quarter note followed by a slash and a vertical line.

A musical staff in treble clef with a 12/8 time signature. It contains three measures for completion: 1. A quarter note followed by a quarter note. 2. A quarter note followed by a quarter note with a '2' above it. 3. A quarter note followed by a quarter note followed by a quarter note.

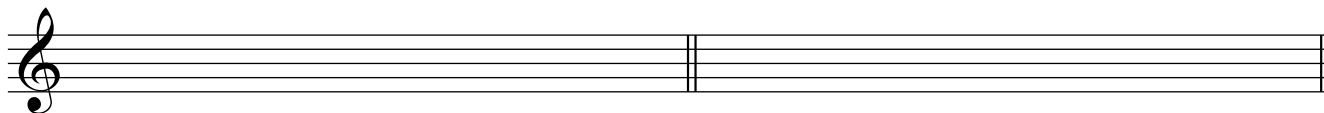
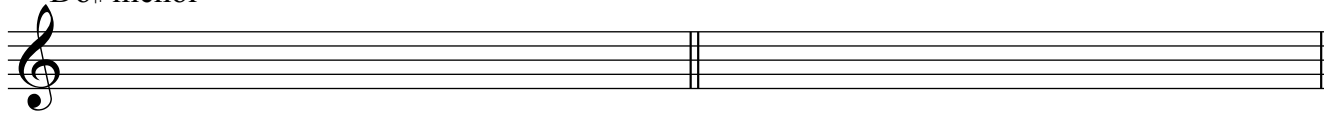
A musical staff in treble clef with a 3/4 time signature. It contains five measures for completion: 1. A quarter note followed by a slash and a vertical line. 2. A quarter note followed by a quarter note. 3. A quarter note followed by a slash and a vertical line. 4. A quarter note followed by a slash and a vertical line. 5. A quarter note followed by a quarter note followed by a quarter note with a '3' above it.

2 3.- Dibuja y nombra los cuatro tipos de estas escalas:

Do menor



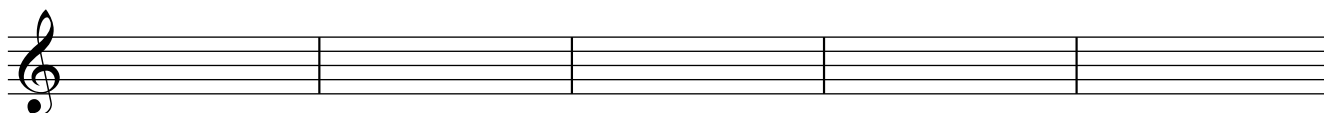
Do# menor



4.- ¿A qué tonalidades pertenecen estas armaduras?:



5.- Dibuja las armaduras de estas tonalidades:



Sol menor

La Mayor

Mi b menor

Do # Mayor

Re Mayor

- Dibuja y nombra estos grados de Fa # menor:

I

III

IV

V

VII

